

# State of Wyoming Corner Record

(In compliance with the *CORNER PERPETUATION AND FILING ACT*, Wyoming Statutes, 1997 Section 33-29-140 et. se., and the Rules and Regulations of the Board of Professional Engineers and Professional Land Surveyors)

Reverse side of this form may be used if more space is needed.

Record of original survey and citation of source of historical information (if corner is lost or obliterated). Description of corner monumentation evidence found and/or monument and accessories established to perpetuate the location of this corner. Sketch of relative location of monument, accessories, and reference points with course and distance to adjacent corner(s) (if determined in this survey). Method and rationale for re-establishment of lost or obliterated corner.

**RECORD:** G.L.O. survey by J. Wesley Hammand in 1873 "80.00 a Sandstone 14x14x6 set 9 inches deep marked 5 notches on South and 1 notches on North."

**FOUND:** 2.5 inch Alum Cap on 5/8 inch rebar - cap is 0.2 above ground on north side of west & south fence corner.

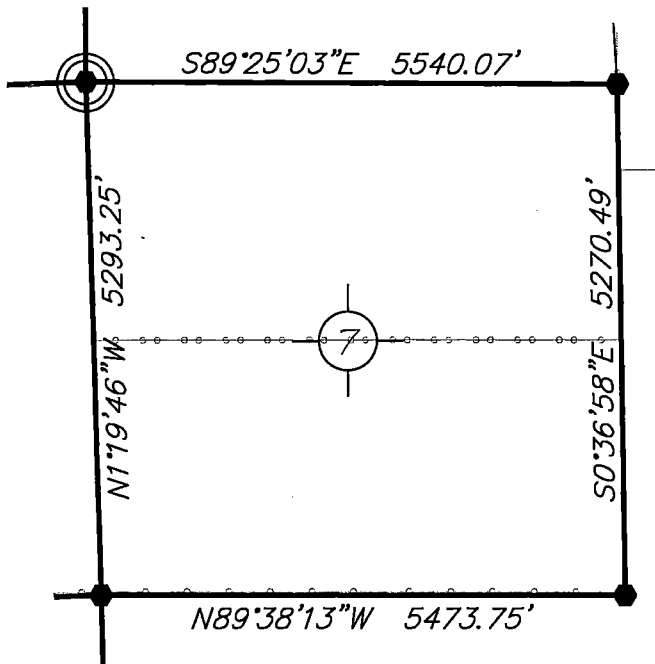
**Re-monumentation:** nothing required

	Point #	North	East	Elev.
NAD83, position:	1761122	352283.27	939807.91	5368.81



RECP #: 754357  
 RECORDED 6/3/2019 AT 10:57 AM BK# 2623 PG# 1677  
 Debra K. Lee, CLERK OF LARAMIE COUNTY, WY PAGE 1 OF 1

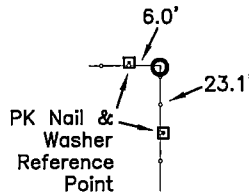
NOTE:  
 BEARINGS AND DISTANCES SHOWN HEREON ARE  
 BASED UPON GRID USING NAD83 WYOMING EAST  
 ZONE AND TRIMBLE R8 GPS OBSERVATION



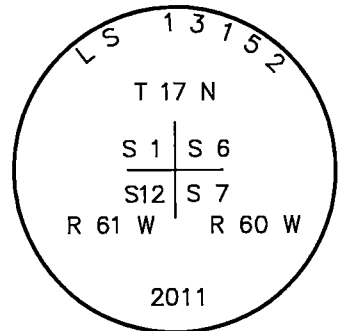
### Monument Location

corner referenced this record =

#### SKETCH



#### LARAMIE COUNTY



### Monument Inscription

Date of Field Work: May 7, 2019

Office Reference: DRG-21776, Pt. 1761122

### Cross Index Plat

	1	2	3	4	5	6	7	8	9	10	11	12	13	14	15	16	17	18	19	20	21	22	23	24	25
A																									
B																									
C		6	5	4	3	2	1																		
D																									
E																									
F																									
G																									
H																									
I																									
J																									
K																									
L																									
M																									
N																									
O																									
P																									
Q																									
R																									
S																									
T																									
U																									
V																									
W																									
X																									
Y																									
Z																									
	1	2	3	4	5	6	7	8	9	10	11	12	13	14	15	16	17	18	19	20	21	22	23	24	25

Firm/Agency, Address

this corner record provided by:

**HAMILTON  
 LAND  
 SURVEYING**

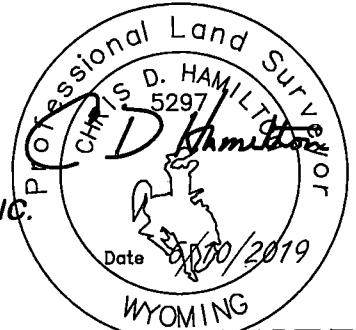
UNDER CONTRACT TO:



**DRG RIFFIN & ASSOCIATES, INC.**  
 1414 ELK ST., SUITE 202  
 ROCK SPRINGS, WY 82901  
 (307) 362-5028

This corner record was prepared by me or under my direction and supervision.

SEAL & SIGNATURE



This "corner record" was filed at \_\_\_\_\_ on the \_\_\_\_\_ day of \_\_\_\_\_ and noted on the cross-index plat.

Debra Lee \_\_\_\_\_ Deputy  
 County Clerk

STATE of WYOMING, Office of Clerk & Recorder, County of Laramie  
 this block provided for county filing documentation

Corner Name: Northwest, Section: 7, T 17N, R 60W, 6th P.M., Cross-Index No.: E-01